



MINI TRACK LOADER

TL100



NO ONE WILL OUTWORK US.™

CASE
CONSTRUCTION

CONSTRUCTION-GRADE SMALL MACHINES FOR PEOPLE WHO WANT TO BUILD A BUSINESS.



These machines are for anyone who needs to do big things in small spaces and wants to upsize the amount of work they can get done with a pick-up truck and a trailer. The all-new CASE Mini Track Loader, gives you the big-time features and big-time attachments you need to knock down more and bigger jobs, so you can grow the size of the projects you tackle, and the size of your business.



THE WORKHORSE THAT TRAILERS LIKE A PONY.

Whether you're looking to load, lift, dig, doze, auger, sweep, blow, rake, grind or plane, this versatile hard worker gives you the capability to get the job done fast and easy. It's easy to operate, goes anywhere, and lets you fit in tight spaces. Lifting capacity is 1,000 pounds. There are more than 40 different attachments available and an optional 14-pin connector which lets you plug into the bigtime attachments. The pilot joystick control makes it easy to operate. And it's all backed by CASE, so everything about it is heavy duty. Including our commitment to helping you grow your business.



EXPLORE THE FEATURES

GET IN. GET OUT. GET PAID.

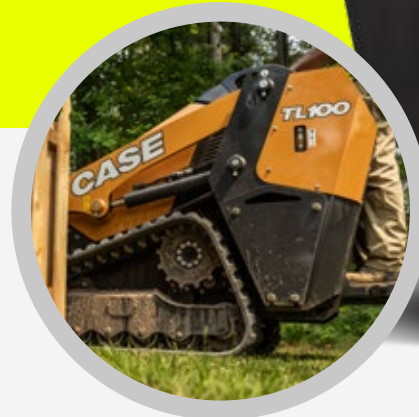
The TL100 Mini Track Loader gives you the construction-grade features you need to work easier, faster and more profitably on all kinds of projects.

FUEL-EFFICIENT POWER.

A quiet, smooth, efficient, powerful Tier 4 Final engine minimizes cost of ownership and maximizes uptime with no DEF and no regeneration needed.

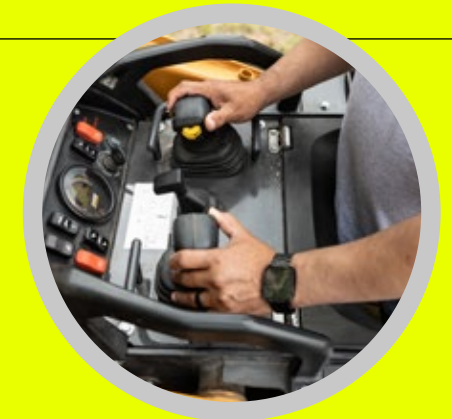
COMPACT TRACK DESIGN.

You get maximum traction on concrete, blacktop, grass, mud and snow. The narrow 7-inch track option allows easy access to narrow entryways, and fits through 36" doors or gates. The wider 10-inch option makes the machine 40" wide, decreasing ground pressure and maximizing stability.



PREMIUM PRODUCTIVITY FEATURES.

ISO pilot joystick control, thumbwheel auxiliary hydraulics and advanced instrumentation create an ergonomic, easy-to-use machine for improved efficiency. Clear sightlines to tracks and bucket cutting edge enhance productivity.



LIFTING PERFORMANCE.

A radial linkage loader arm improves digging performance and decreases required maintenance. A hinge pin height of 86.7" allows for high clearance over many dumpsters and dump trailers.



VERSATILITY.

With 40+ attachment options, the mini track loader has an industry-standard CII interface. You can run soil conditioners, tillers, grapples, grapple buckets, trenchers, mowers, augers and much more. It's designed for simple or complex attachments with standard industry hydraulics and optional 14-pin electrical and CASE drain connectors.

OPERATING WEIGHT

Narrow Track (NT) - 2X Counterweights (STD):	3,536 lb (1 604 kg)
Wide Track (WT) - 6X Counterweight (OPT):	3,783 lb (1 716 kg)

OVERALL DIMENSIONS

Overall Height	56.5 in (1 435 mm)
Overall Length:	
Without Bucket	85.6 in (2 175 mm)
Machine Width:	
Narrow Track	35.0 in (890 mm)
Wide Track	40.4 in (1 026 mm)
Bucket Width:	
Narrow Track	36.0 in (914 mm)
Wide Track	42.0 in (1 067 mm)

SERVICE CAPACITIES

Fuel Tank	7.9 gal (30 L)
Engine oil w/ filter	4.8 qt (4.5 L)
Hydraulic system	4.5 gal (17 L)
Engine Coolant	0.9 gal (3.5 L)

STANDARD EQUIPMENT

OPERATOR ENVIRONMENT

- Hydraulic pilot joystick control
- Loader and ground drive control lockout
- Cushioned operator platform
- Operator presence sensor
- Operator grab handles
- Key start
- Hand throttle
- Cup holder
- Pocket for cellular phone

ENGINE

- Engine tip-over shut-off
- Glow plug starting aid
- Locking fuel cap
- Fuel filter with water separator
- Electric fuel pump
- Lock-able hood compartment

OPTIONAL EQUIPMENT

DRIVETRAIN

- Wide rubber track belt

HYDRAULICS

- Case drain attachment connection
- Bio-hydraulic oil and lubricants

ENGINE

Model	Kubota D1305-E4B
Emissions Certification	Stage V
Cylinders	3
Displacement	77.0 in ³ (1.261 L)
Fuel	Diesel
Exhaust aftertreatment	N/A
Engine speeds	RPM
Rated – full load	2600
Horsepower @ 2600 RPM – SAE J1349:	
Gross	24.8 hp (18.5 kW)
Net	24 hp (18.0 kW)
Peak torque @ 1700 RPM	59.1 lb-ft (80.1 N-m)

ELECTRICAL

System Voltage	12 Volts
Alternator	60 amp
Battery	62 AHR
	540 cold-cranking amps @ 0° F (-18° C°)

DRIVETRAIN

Transmission Type	Hydrostatic
Max. Travel speed	4.7 mph (7.5 kph)
Parking brake Type	SAHR pin brake

DRIVETRAIN

- Dual hydrostatic drive motors
- SAHR parking brake
- 5 roller undercarriage
- Narrow rubber track belt

HYDRAULICS

- 3-spool loader control valve
- 1x dual acting auxiliary hydraulics
- Proportional auxiliary hydraulic control on joystick with detent
- 1-way or 2-way auxiliary hydraulic selector valve
- Loader arm float

TELEMATICS

- CASE SiteWatch™ Telematics – includes hardware and a 5-yr data subscription

LOADER

- 36 in dirt bucket
- 42 in dirt bucket
- Bolt on bucket teeth
- Bolt on bucket cutting edge
- 6x additional counterweights

LOADER PERFORMANCE SPECS

Lift Geometry	Radial Lift
Narrow Track Rated operating capacity – ROC*:	
35% of tipping load	992 lb (450 kg)
50% of tipping load	1,416 lb (643 kg)
Narrow Track Tipping load*	2,833 lb (1 285 kg)
Wide Track Rated operating capacity – ROC*:	
35% of tipping load	1,102 lb (500 kg)
50% of tipping load	1,574 lb (714 kg)
Wide Track Tipping load*	3,148 lb (1 428 kg)

NOTE: *Measured using standard equip bucket.

HYDRAULICS

Implement pump type	Fixed Gear
Displacement	1.2 in ³ (19 cm ³)
Standard flow @ rated engine RPM:	
@ 100% efficiency	13.2 gpm (50 L/min)
Loader control valve:	
Type	Open center
Implement Hydraulics Operating Pressure:	2,800 psi (190 bar)

LOADER

- Radial lift geometry
- CII mechanical attachment coupler
- Loader lift arm support strut
- 2x additional counterweight

ELECTRICAL

- 12V power plug socket
- Front and rear LED work lights
- Master battery disconnect
- Horn

WARRANTY

- Base warranty coverage: 2-Year/2,000-Hour Full Machine Limited Warranty

ELECTRICAL

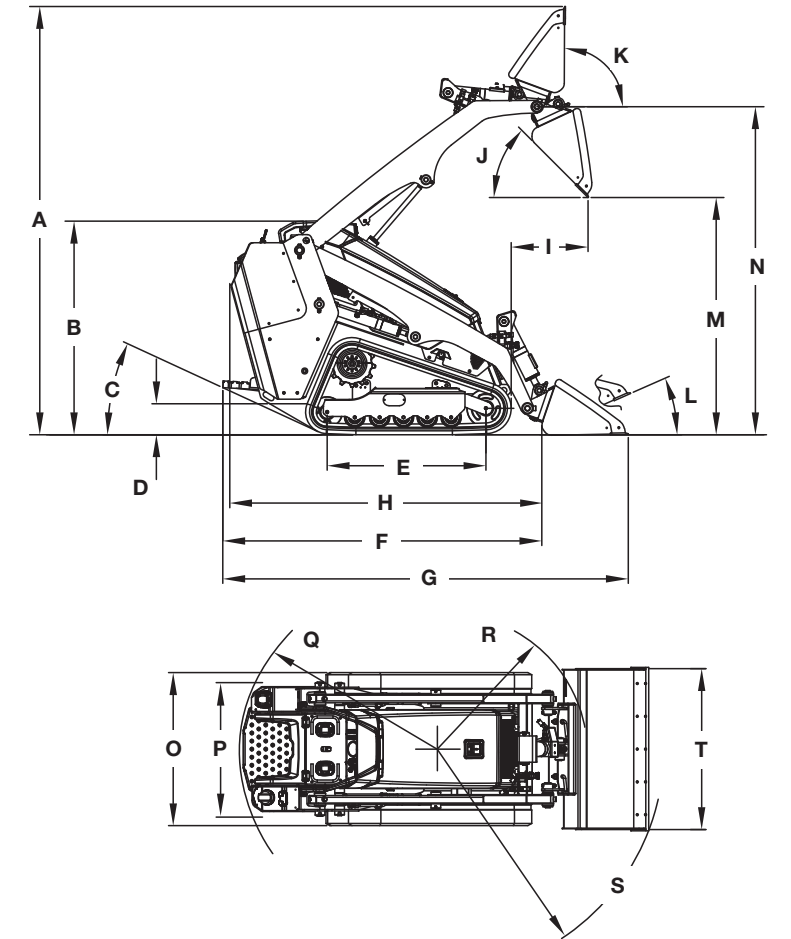
- 14-pin electrical auxiliary connection

OTHER

- English, Spanish, or French Operator Manual

DIMENSIONS

A. Overall operating height	114.6 in (2 911 mm)
B. Overall height	56.5 in (1 435 mm)
C. Rear departure angle	24°
D. Ground clearance	8.7 in (222 mm)
E. Track length on ground	41.9 in (1 065 mm)
Overall length:	
F. without bucket	85.6 in (2 175 mm)
G. with standard bucket	110.1 in (2 796 mm)
H. Transport Length – no bucket, platform raised:	85 in (2 155 mm)
I. Reach at Maximum Dump	20.1 in (511 mm)
J. Dump angle	48°
K. Maximum rollback at full height	90°
L. Maximum rollback at ground	24°
M. Dump height – standard bucket	61.0 in (1 549 mm)
N. Hinge Pin Height	86.7 in (2 201 mm)
O. Machine width:	
Narrow Track	35.0 in (890 mm)
Wide Track	40.4 in (1 026 mm)
P. Track Gauge:	
Narrow Track	28.0 in (710 mm)
Wide Track	30.6 in (776 mm)
Clearance Circle Radius:	
Q. Rear	53.1 in (1 348 mm)
R. No bucket	35.9 in (913 mm)
S. Standard bucket	60.7 in (1 541 mm)
T. Bucket Width:	
Narrow Track	36.0 in (914 mm)
Wide Track	42.0 in (1 067 mm)



Line drawings are for illustrative purpose only and may not be exact representation of unit.

TRACK SELECTION

Type	Area	Ground Pressure	Width to Outside Track
7 in (180 mm) – Narrow Track	594 in ² (0.38 m ²)	5.9 psi (0.41 kg/cm ²)	35.0 in (890 mm)
10 in (250 mm) – Wide Track	825 in ² (0.53 m ²)	4.6 psi (0.32 kg/cm ²)	40.4 in (1 026 mm)

CaseCE.com

©2023 CNH Industrial America LLC. All rights reserved. CASE is a trademark registered in the United States and many other countries, owned by or licensed to CNH Industrial N.V., its subsidiaries or affiliates. CNH Industrial Capital is a trademark in the United States and many other countries, owned by or licensed to CNH Industrial N.V., its subsidiaries or affiliates. Printed in U.S.A. Contains 10% post-consumer fiber.

Form No. CCE202310TL100
Replaces Form No. CCE202305TL100

TL100

IMPORTANT: CASE Construction Equipment Inc. reserves the right to change these specifications without notice and without incurring any obligation relating to such change. Availability of some models and equipment builds vary according to the country in which the equipment is used. The illustrations and text may include optional equipment and accessories and may not include all standard equipment. Your CASE dealer/distributor will be able to give you details of the products and their specifications available in your area.



CASE Construction Equipment is biodiesel-friendly. NOTE: All engines meet current EPA emissions regulations. All specifications are stated in accordance with SAE Standards or Recommended Practices, where applicable.



Always read the Operator's Manual before operating any equipment. Inspect equipment before using it, and be sure it is operating properly. Follow the product safety signs and use any safety features provided.

NO ONE WILL OUTWORK US.™



©2023 CNH Industrial America LLC. All rights reserved. CASE, CNH Industrial Capital and CNH Industrial Trademarks are registered in the United States and many other countries, owned by or licensed to CNH Industrial NV., its subsidiaries or affiliates.

IMPORTANT: CASE Construction Equipment Inc. reserves the right to change these specifications without notice and without incurring any obligation relating to such change. Availability of some models and equipment builds vary according to the country in which the equipment is used. The illustrations and text may include optional equipment and accessories and may not include all standard equipment. Your CASE dealer/distributor will be able to give you details of the products and their specifications available in your area.

SAFETY NEVER HURTS!™ Always read the Operator's Manual before operating any equipment. Inspect equipment before using it, and be sure it is operating properly. Follow the product safety signs, and use any safety features provided.

Form No. CCE202311SMAT